

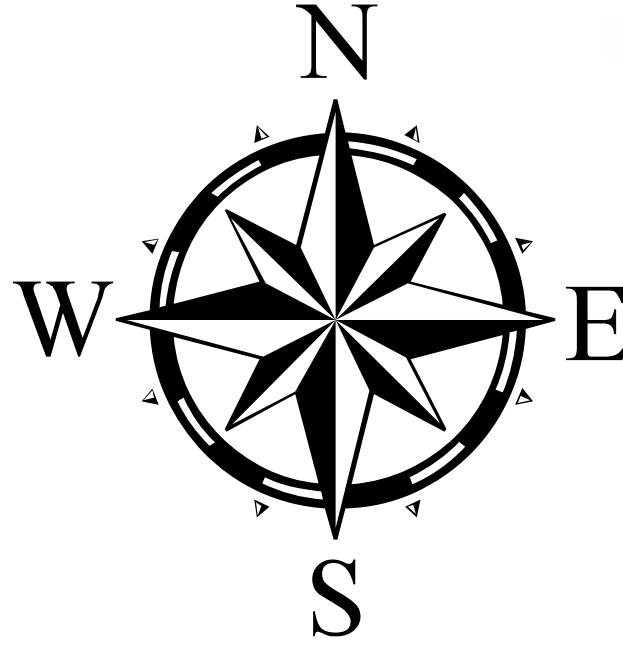
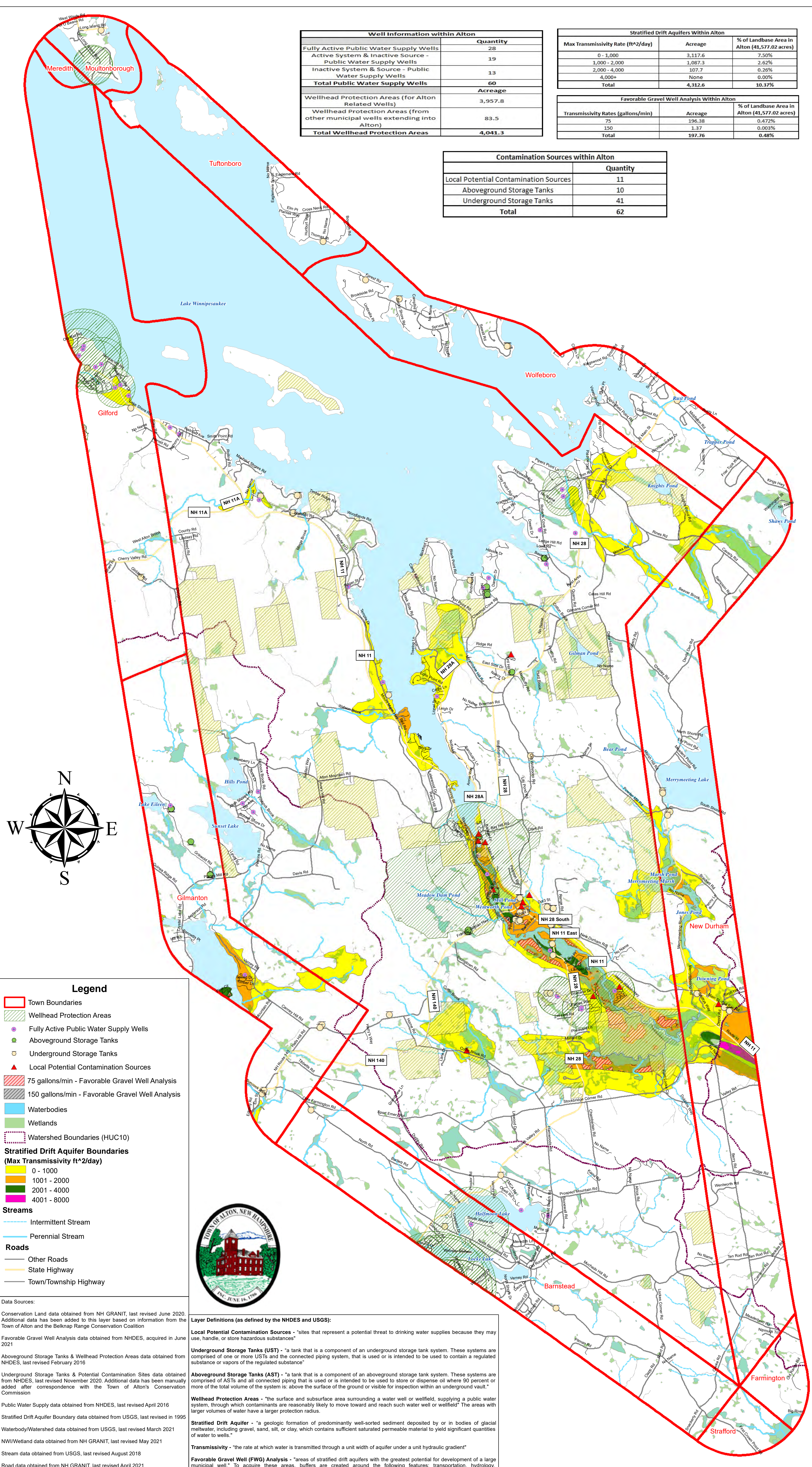
# Alton Groundwater Resources & Potential Contamination Sources

Well Information within Alton	
Fully Active Public Water Supply Wells	28
Active System & Inactive Source - Public Water Supply Wells	19
Inactive System & Source - Public Water Supply Wells	13
<b>Total Public Water Supply Wells</b>	<b>60</b>
<b>Acreage</b>	
Wellhead Protection Areas (for Alton Related Wells)	3,957.8
Wellhead Protection Areas (from other municipal wells extending into Alton)	83.5
<b>Total Wellhead Protection Areas</b>	<b>4,041.3</b>

Stratified Drift Aquifers Within Alton		
Max Transmissivity Rate (ft <sup>2</sup> /day)	Acreage	% of Landbase Area in Alton (41,577.02 acres)
0 - 1,000	3,117.6	7.50%
1,000 - 2,000	1,087.3	2.62%
2,000 - 4,000	107.7	0.26%
4,000+	None	0.00%
<b>Total</b>	<b>4,312.6</b>	<b>10.37%</b>

Favorable Gravel Well Analysis Within Alton		
Transmissivity Rates (gallons/min)	Acreage	% of Landbase Area in Alton (41,577.02 acres)
75	196.38	0.472%
150	1.37	0.003%
<b>Total</b>	<b>197.76</b>	<b>0.48%</b>

Contamination Sources within Alton	
Local Potential Contamination Sources	11
Aboveground Storage Tanks	10
Underground Storage Tanks	41
<b>Total</b>	<b>62</b>



**Legend**

- Town Boundaries
- Wellhead Protection Areas
- Fully Active Public Water Supply Wells
- Aboveground Storage Tanks
- Underground Storage Tanks
- Local Potential Contamination Sources
- 75 gallons/min - Favorable Gravel Well Analysis
- 150 gallons/min - Favorable Gravel Well Analysis
- Waterbodies
- Wetlands
- Watershed Boundaries (HUC10)

**Stratified Drift Aquifer Boundaries (Max Transmissivity ft<sup>2</sup>/day)**

- 0 - 1000
- 1001 - 2000
- 2001 - 4000
- 4001 - 8000

**Streams**

- Intermittent Stream
- Perennial Stream

**Roads**

- Other Roads
- State Highway
- Town/Township Highway



**Data Sources:**

Conservation Land data obtained from NH GRANIT, last revised June 2020. Additional data has been added to this layer based on information from the Town of Alton and the Belknap Range Conservation Coalition

Favorable Gravel Well Analysis data obtained from NHDES, acquired in June 2021

Aboveground Storage Tanks & Wellhead Protection Areas data obtained from NHDES, last revised February 2016

Underground Storage Tanks & Potential Contamination Sites data obtained from NHDES, last revised November 2020. Additional data has been manually added after correspondence with the Town of Alton's Conservation Commission

Public Water Supply data obtained from NHDES, last revised April 2016

Stratified Drift Aquifer Boundary data obtained from USGS, last revised in 1995

Waterbody/Watershed data obtained from USGS, last revised March 2021

NWI/Wetland data obtained from NH GRANIT, last revised May 2021

Stream data obtained from USGS, last revised August 2018

Road data obtained from NH GRANIT, last revised April 2021

Town boundary data obtained from NH GRANIT, last revised April 2013

**Layer Definitions (as defined by the NHDES and USGS):**

**Local Potential Contamination Sources** - "sites that represent a potential threat to drinking water supplies because they may use, handle, or store hazardous substances"

**Underground Storage Tanks (UST)** - "a tank that is a component of an underground storage tank system. These systems are comprised of one or more USTs and the connected piping system, that is used or is intended to be used to contain a regulated substance or vapors of the regulated substance"

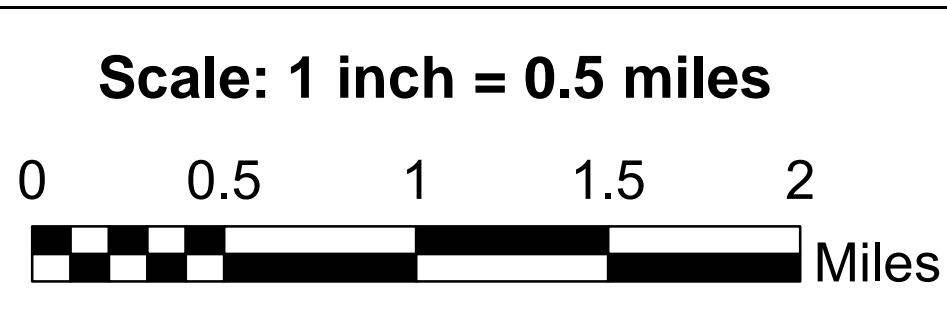
**Aboveground Storage Tanks (AST)** - "a tank that is a component of an aboveground storage tank system. These systems are comprised of ASTs and all connected piping that is used or is intended to be used to store or dispense oil where 90 percent or more of the total volume of the system is: above the surface of the ground or visible for inspection within an underground vault."

**Wellhead Protection Areas** - "the surface and subsurface area surrounding a water well or wellfield, supplying a public water system, through which contaminants are reasonably likely to move toward and reach such water well or wellfield" The areas with larger volumes of water have a larger protection radius.

**Stratified Drift Aquifer** - "a geologic formation of predominantly well-sorted sediment deposited by or in bodies of glacial meltwater, including gravel, sand, silt, or clay, which contains sufficient saturated permeable material to yield significant quantities of water to wells."

**Transmissivity** - "the rate at which water is transmitted through a unit width of aquifer under a unit hydraulic gradient"

**Favorable Gravel Well (FWG) Analysis** - "areas of stratified drift aquifers with the greatest potential for development of a large municipal well." To acquire these areas, buffers are created around the following features: transportation, hydrology, known/potential contamination sources, and urban features. The areas beyond the buffers within the aquifers are FWGs. 75 gal/min (USGS min Transmissivity = 1000 ft<sup>2</sup>/day) represent high yield wells and 150 gal/min represent very high yield wells.



Alton Groundwater Resources & Potential Contamination Sources NRI Map  
 Created: September 28, 2021  
 Last revised: October 6, 2022

Prepared for the Town of Alton, NH  
 This map should only be used for planning purposes, not for legal bound interpretation.

Stoney Ridge Environmental, LLC  
 8 Kiana Road  
 Alton, NH 03809  
 Phone: 603-776-5825

